

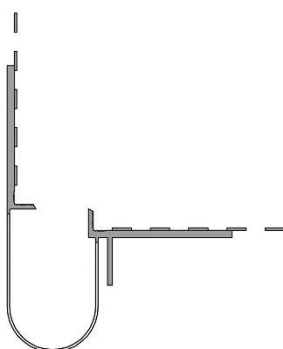
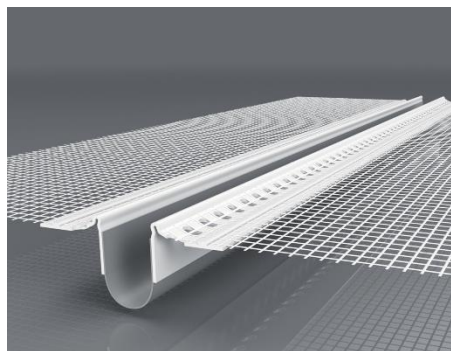
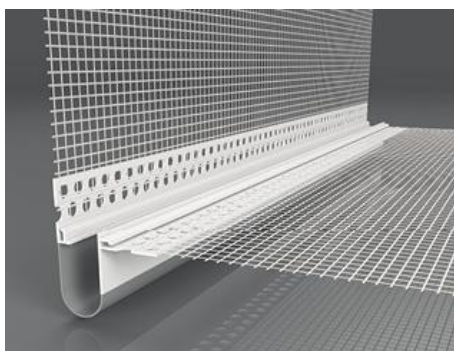
P040 – P040.1 – P041 – P041.1

Use:

Expansion Perfil bead with glass fibre mesh for joining separate surfaces and forming a visible expansion joint in the thermal insulation system – ETICS

Material:

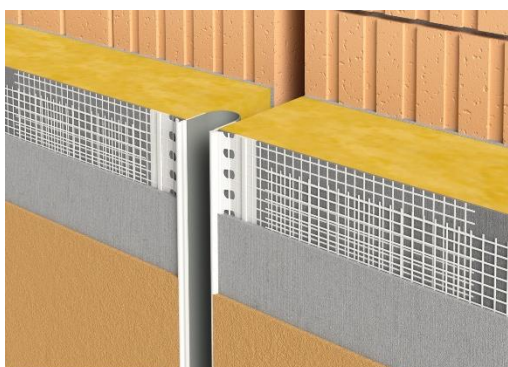
- PVC - UV-stable, alkali-proof
 - 1,1mm thickness (+/-1)
 - 2500mm Length.
 - Two perforation lines on both sides
- Glass fibre mesh complying with ETAG 004.
- Softened PVC with expansive PES fabric.



Advantages:

- High-quality joining of separate surfaces expected to move mutually
- The expansion joint is protected against weather effects
- Prevents penetration of water into the system
- Invisible edges, the plastic part is hidden under the plaster
- The mesh is welded to the profile - thermal joint
- Overlap of softened pvc on the end of profile covers the connection of the joint
- Sophisticated shape enabling easy application basecoat and topcoat layers

CODE	Length of PVC profile (mm)	Length of Mesh (mm)	Unit pack (pcs.)	Unit pack (m)	Palette (m)	Joint Dimension (mm)	Joint Type Facade	Soft PVC Color	Mesh Width (mm)
P040	2500	2580	25	62,5	1875	20 to 40	Continuous	GREY	100 + 100
P040.1	2500	2580	25	62,5	1875	20 to 40	CORNER	GREY	100 + 100
P041	2500	2580	25	62,5	1875	20 to 40	Continuous	WHITE	100 + 100
P041.1	2500	2580	25	62,5	1875	20 to 40	CORNER	WHITE	100 + 100



Storage:

Storage of this product must be done in its original packaging, in a dry place, protected from sun exposure, without any contact with water or other liquids. Ideal storage temperature: +5°C - +35°C

Precautions:

Handling of this product does not require special care. However, it may cause irritation on sensitive skin. In this case, rinse thoroughly with cold water and soap.

All details complies the up-to date our knowledge and experience. Our information characterise simply the character our products and don't account for contractual legal relationship. They don't absolve the customer from verifying our products to their applicability for the contemplated usage on their own. We reserve the right for changing due to technical or planning laws. Product-drawings on this sheet aren't true to scale. With publishing this technical data sheet are all back issues invalid. The stand of the revision is essential for the use of the products at the date of mounting. Printed versions could differ from the effectual stand of revision.